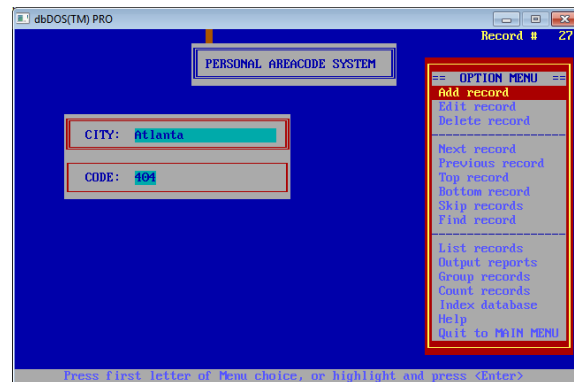
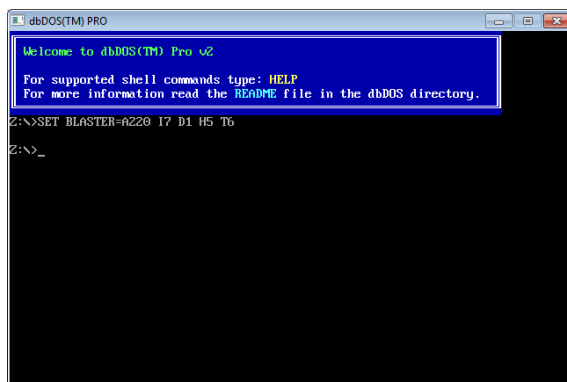




dbDOS™ PRO 4 – FAQ

What is dbDOS™ PRO 4?

dbDOS™ PRO 4 is a virtual machine (VM) that is based on MS-DOS (DOS), which will allow users to run dBase for DOS programs. dbDOS™ PRO 4 is focused on running existing dBASE III+, IV (versions 1.0, 1.5, and 2.0), and V for DOS programs. However, dbDOS™ PRO 4 can now run virtually any other MS-DOS based programs.



What is dbDOS™ PRO 4N – Networking?

dbDOS™ PRO 4N – Networking is the same basic product as dbDOS™ PRO 4, except that it supports multi-user networking based application build in dBASE. The engine is the same as the single-user engine found in dbDOS PRO 4, but **YOU MUST** purchase a license for each network node that will be running a DOS based product. This means if you have five (5) people on a network using some data on a shared drive, that each one of those users must have a copy of dbDOS™. The dbDOS™ PRO 4N – Networking only has two activations allowed. If you reach your product activation limit, you must call Customer Service.

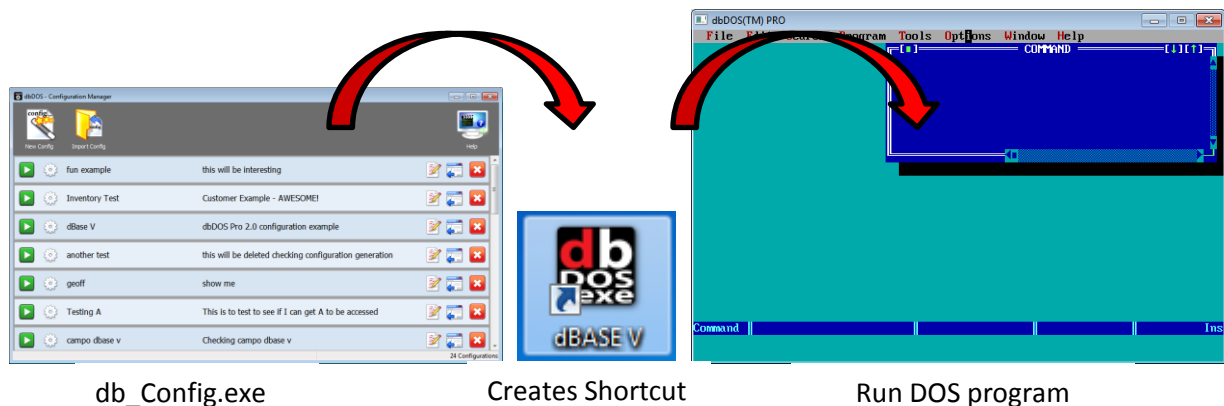
dbDOS™ PRO 4 and dbDOS™ PRO 4N – Networking basically the same?!

Yes! For the rest of the FAQ you can interchange the products because the feature set is the same, the engine is the same, but the number of copies if used in a networking situation needs to be reflected in the purchase of those licenses.

dbDOS PRO™

How do you use it?

After moving the dBASE software; dBASE compiled programs and optionally the source code; and the dBASE data files to the new machine, install the dbDOS™ PRO 4 software on the new machine, which will automatically run the Configuration Utility program so that you can create shortcuts on the latest Windows OS. Double-click on the shortcut and you are up and running.



What can you do with dbDOS™ PRO 4?

You can run existing DOS based programs on the latest hardware and on the latest Operating System from Microsoft. dbDOS™ is focused on dBASE for DOS products, but now can run other DOS based programs.

Does dbDOS™ PRO 4 modify or change my existing DOS programs?

No, dbDOS™ PRO 4 does not change any users programs or data, it only facilitates the ability to run those existing MS-DOS / DOS programs like they were located on a DOS machine.

Do you include the supported dBASE for DOS programs with dbDOS™ PRO 4?

No, the product only includes the software to run the DOS based programs; the end-user will be responsible for having the dBASE DOS Software. dBase LLC (dBase), now offers the ability to purchase dBASE CLASSIC™ based on the dBASE V (5.0) for DOS product. You can also buy the products together as a bundle.

To get both dBASE Classic (dBASE for DOS V and dbDOS together go here :

<http://store.dbase.com/ProductDetails.asp?ProductCode=DBCLASSICBUNDLE>



Does dbDOS™ PRO 4 move any files?

No, the customer is responsible for moving both the programs and data from the old hardware and moving it to the new hardware and software. The additional benefit from this operation is that both the programs and data should be backed up in this process.

Does dBase still offer support on dbDOS™ 1.x, 2, or PRO 3 installations?

No. The latest version of dbDOS™ PRO 4 is the only version that will be supported by dBase at this time.

Can I modify my existing dBASE Programs?

Absolutely! This is one of the great things about dbDOS™ PRO 4, it allows you to run DOS based dBASE just like you did back when you purchased the product. The product runs just like it did when it was on an original DOS based machine. Therefore, developers can update, modify, and create new applications using their existing DOS based dBASE products. Non developers can use dbDOS™ PRO 4 to run those programs.

Can I print with dbDOS™ PRO 4?

YES! Printing is one of the most important features of dbDOS™ and where competing products fail. dbDOS™ PRO 4 comes with the ability to print to a locally connected printer and has support for advanced users that need network printing support.

Will output to the printer look like the old printouts from MS-DOS?

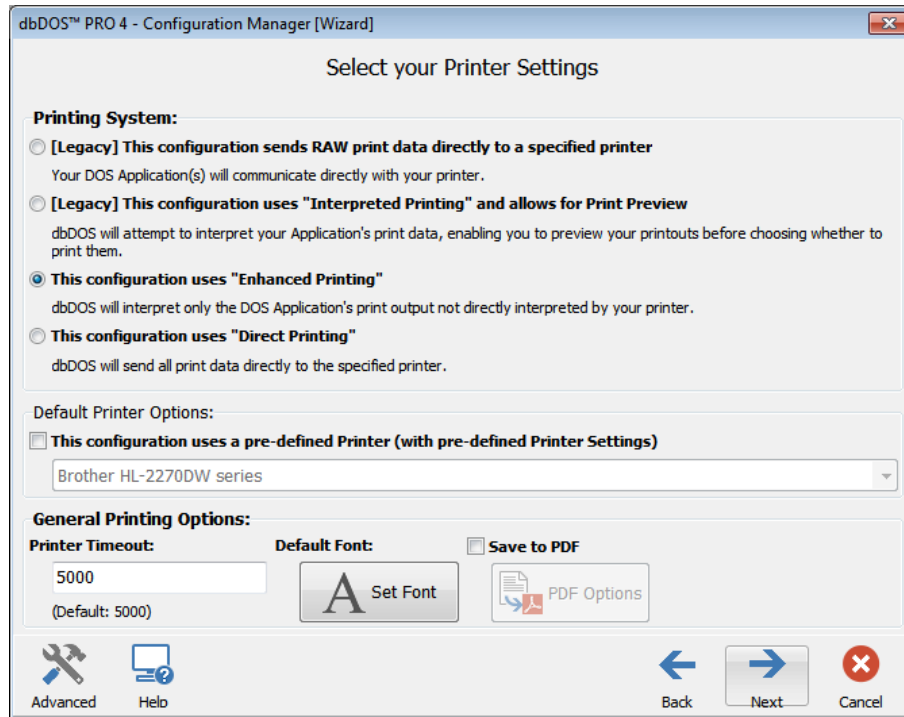
The answer depends on what you are printing out. Keep in mind that dbDOS™ is trying to generate output of data from a program that was released more than 30 years ago. While dbDOS™ will print the information, it may not look exactly like the old printouts. This could be due to the multiple issues. Some of these issues include:

- Printer commands from dBASE not compatible with current printer
- Printer driver from DOS not compatible with current printer hardware
- Some print escape sequences not recognized on the latest Windows OS
 - Example "Condensed" print is currently not supported in Windows 7

With this new feature, we are trying to support printer models that in some cases could be over 30 years old. We do not have a warehouse full of those printers to test with nor do we have an extensive code library of reports that utilize the special Escape sequences for those printers.



What are the Print Features found in dbDOS™ PRO 4?



Printer dialog from the dbDOS Configuration Manager (options)

- **[Legacy] RAW:** Raw Print Feature includes the system Codepage, region settings, and printer support functionality using the standard print mechanism bypassing the Windows print scheduler.
- **[Legacy] Interpreted:** This uses a print buffer to send the characters to an edit control where Print Preview and some customization can be performed. This feature is only included for backward compatibility.
- **Enhanced Printing:** This is the replacement for the old Interpreted settings and allows for advanced features like printing to PDF.
- **Direct Printing:** This replaces the old RAW printing with new features and capabilities.

Are there recommendations on printing options?

Yes, it is recommended that **Enhanced** be tried first, if that does not give the results expected, then it would be suggested that you use **Direct**, then **RAW** and as a last resort **Interpreted**.



Can I run other DOS programs using dbDOS™ PRO 4?

YES. We do not test other MS-DOS based products; however, the system should be able to run almost any DOS based program. You must have the product, license and be able to install the product on the machine with dbDOS™.

What common DOS based programs do people run with dbDOS™ PRO 4?

We have users of dbDOS™ using really popular DOS based programs like FoxPro, Clipper, Paradox, Lotus 1,2, 3, and WordPerfect.

Can I run other DOS versions of dBASE?

Currently dbDOS™ PRO 4 is certified on dBASE III+, IV (versions 1.0, 1.5, and 2.0), and version V of the product. This does not mean the other products will not work, but they have not been tested or certified to run in the environment.

Can I run .bat files in dbDOS™ PRO 4?

Sure can! Now with the addition of 4DOS access in loaded in all configurations the ability to work with advanced .bat or command files is easier than ever.

How is 4DOS integrated?

4DOS is installed under the main dbDOS™ directory in a directory called \4DOS. All the files needed are located in that directory and that is also where you can find the reference guide to 4DOS. The path is set to use the B: drive (not used much) and the Path for the files is added to the path. This would need to be changed if you use the B: as a drive, however we have not encountered that use with dbDOS.

I don't see dBASE II or dBASE III on the list is there a reason?

Yes, dbDOS™ PRO 4 does not work with dBASE II or the initial release of dBASE III. We do support dBASE III+ and greater.

How many dbDOS™ PRO 4 licenses do I need?

dbDOS™ PRO 4 is sold and licensed on a per-user basis (Name User). That means a person who purchases dbDOS™ PRO 4 can install the product on multiple machines as long as only that person uses those machines and only one machine at a time. dbDOS™ PRO 4 is licensed on a named user basis, so if multiple people will be using the product, each person that uses the product must purchase a copy of the product.

If you are using dbDOS™ PRO 4N – Networking, then each machine that is connected to the network that will work with DOS based products needs to have a license of dbDOS™ PRO 4N.



Do I have to Activate my dbDOS™ PRO 4?

Yes. dbDOS™ PRO 4 now has to be Activated on each machine it is loaded on.

Does dbDOS™ PRO 4 use DOSBOX?

Yes, as a base. We do use DOSBOX as the VM for the dbDOS™ product. However, we have made changes to the DOSBOX product to allow it to print dBASE for DOS programs and reports. These code changes to DOSBOX are available on the dbase.com website. Keep in mind that added significant features and functionality outside of VM part of the product to make it easier to install, setup, and run your MS-DOS applications. Those additional features and functions are 100% dBase, LLC code.

Will using dbDOS™ PRO 4 convert my dBASE for DOS programs to run on Windows?

NO. dbDOS™ PRO 4 only runs the dBASE for DOS programs and applications on the Windows Operating system. dbDOS™ PRO 4 makes no changes to the underlying programs, code, or data.

Does dbDOS™ PRO 4 support the Windows based Visual dBASE (such as VdB 5.0, 5.5 and 5.7)?

NO.

Does dbDOS™ PRO 4 require Administrator rights on the particular Windows Operating Systems?

No, dbDOS™ PRO 4 has been programmed to take full advantage of Microsoft Windows® UAC™ (User Access Control) approach, so it is not a requirement to have Administrator privileges.

Is it possible to install additional dBASE based software and use it in dbDOS™ PRO 4?

Yes. The user needs to get the new programs and data installed on the machine where dbDOS™ PRO 4 is located. Once the software is in a location, the configuration needs to point to that additional directory.

Does dbDOS™ PRO 4 support network shares and multiple data folders?

Absolutely!

Does dbDOS™ PRO 4 allow the users to create new programs and code?

Yes. dbDOS™ PRO 4 enables the user to run dBASE for DOS just like they were on a MS-DOS machine from years back. Users should be able to modify and update programs to run inside dbDOS™ PRO 4.



Can dbDOS™ PRO 4 display in full screen mode?

Yes. One of the options when creating a configuration is to start the application in full screen mode. Note: There is certain hardware configurations that will not allow full-screen to work, however, in the new PRO 4 edition of the product, additional options have been made available to make the option work on more hardware.

Can dbDOS™ PRO 4 support Multi-User dBASE applications?

YES, it is recommended that you purchase dbDOS PRO 4N for the networking. However, the single user product will work the same as the 4N product. We separated them because of licensing and support issues.

What Windows Operating Systems support dbDOS™ PRO 4 and dbDOS™ PRO 4N?

dbDOS™ VM is designed to run on any Microsoft OS, we certify dbDOS on Windows Vista, 2003, 7, 8, 8.1 and 2012. dbDOS™ can run on Microsoft Windows XP but **IT IS NOT SUPPORTED!**