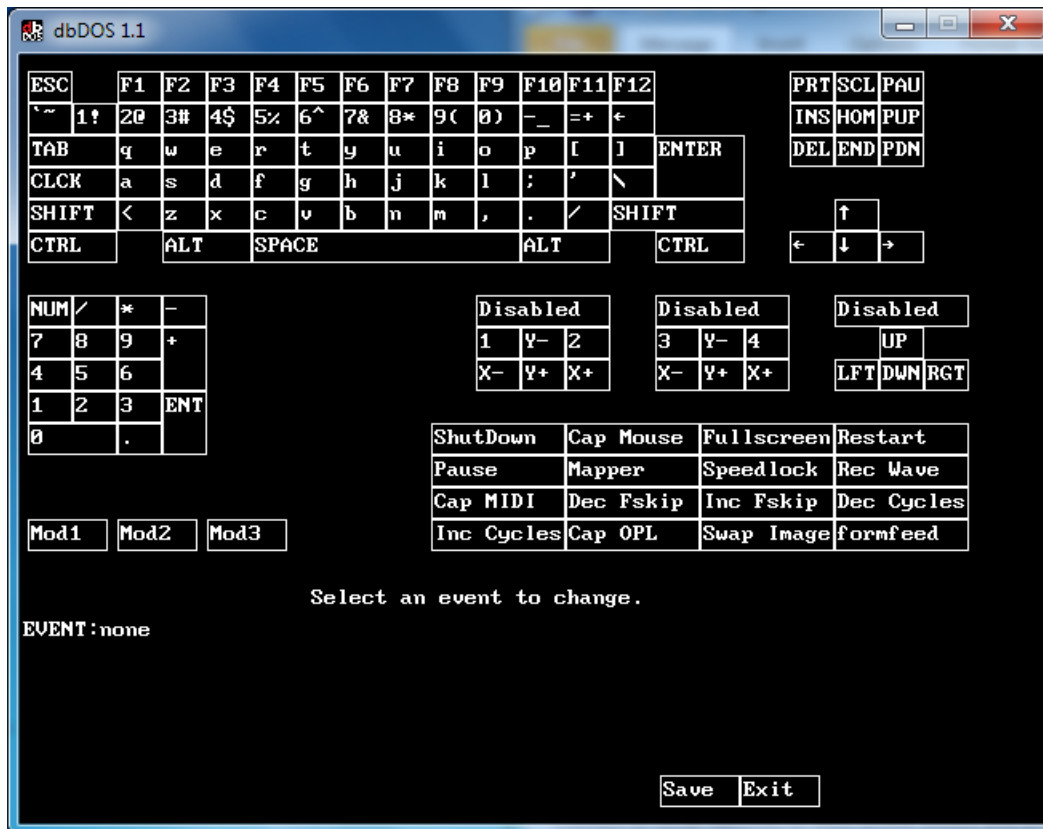




Changing keyboard mapping in dbDOS

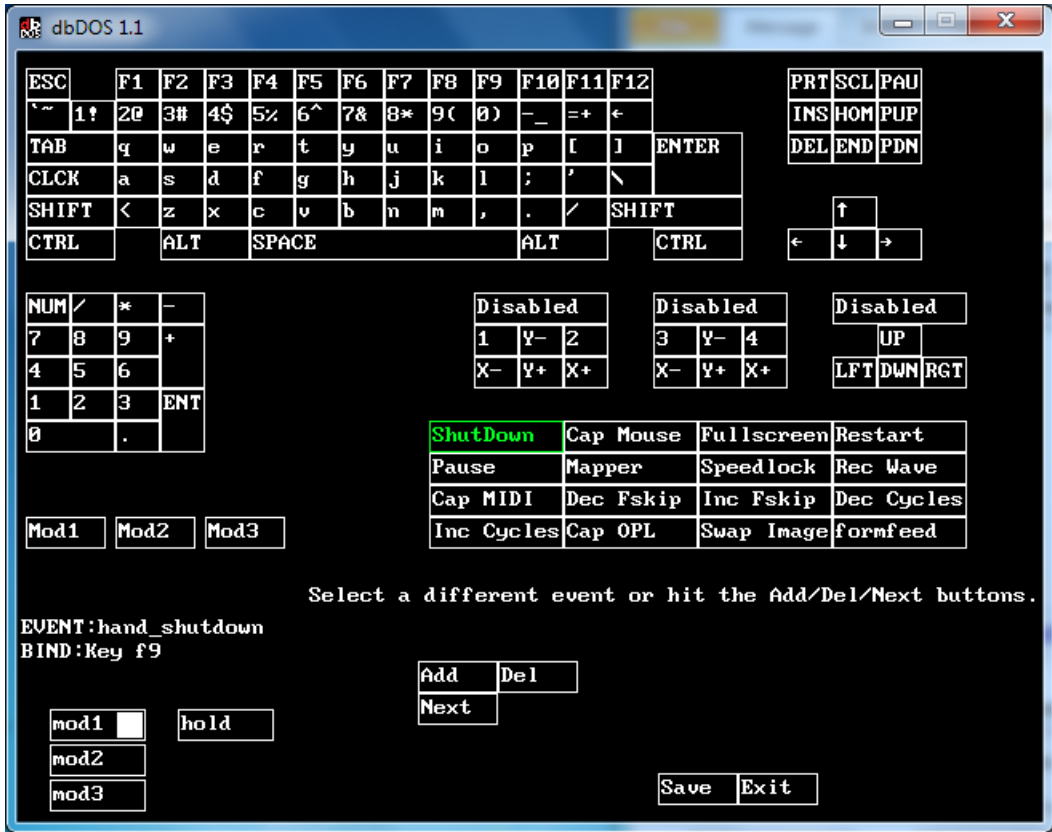
If you want to change the keyboard mapping, here is how you can do it.

1. Start the shortcut as you normally would (opening up to the DOS screen and not in dbase.exe)
2. Press the **CTRL-F1** combination, you will see a black screen



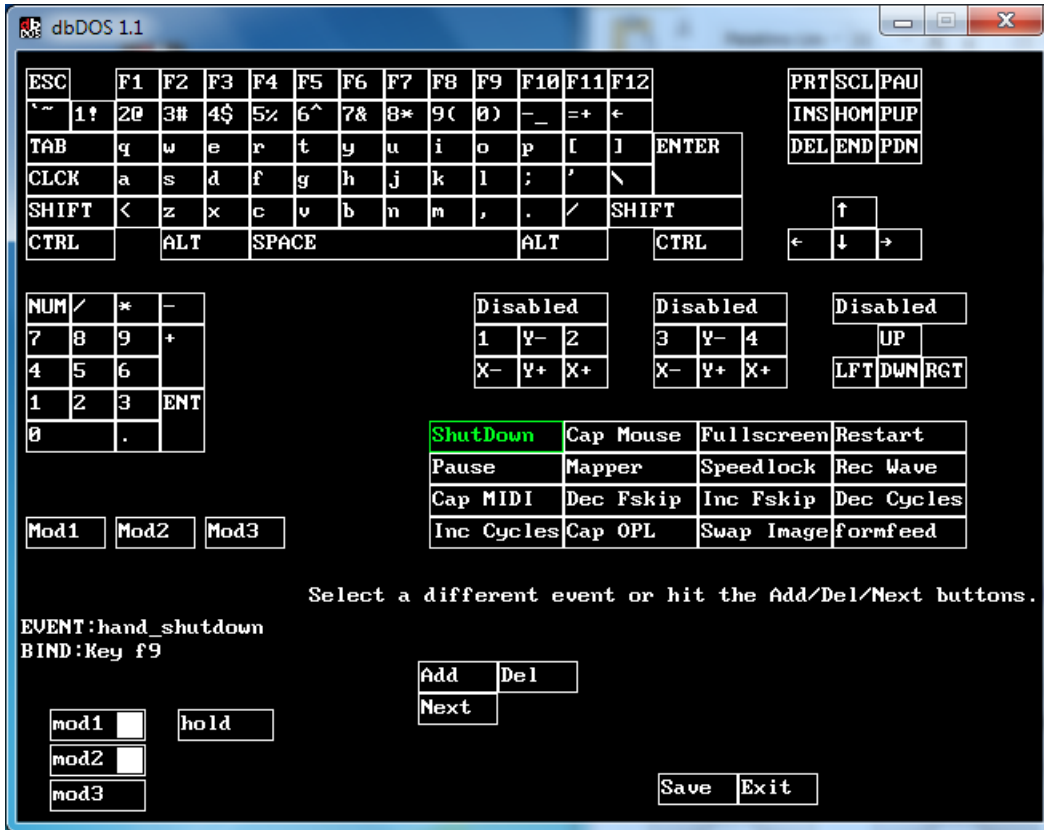
3. Using your mouse click the ShutDown box it will turn green as below:

dbDOS PRO™



4. Now say we want to change the CTRL-F9, which is the Kill dbDOS command and we wanted to make it CTRL-ALT-F9...
5. Click the Mod1 box and make sure that it has a white box as it does above
 - a. Mod1 = CTRL
 - b. Mod2 = ATL
 - c. Mod3 = not used
6. Click with the mouse on the Mod2 box as well, so it should look like below:

dbDOS PRO™



7. Hit the Save button
8. Repeat for the Cap Mouse (CTRL-F10) key sequence I would recommend the CTRL-ALT-F10 combination, by the way with the upgrade to 1.1 you really do not need CTRL-F10 because we have the mouse on automatic.
9. Now, I believe that will stay as long as you keep that configuration, so will only have to do it once.