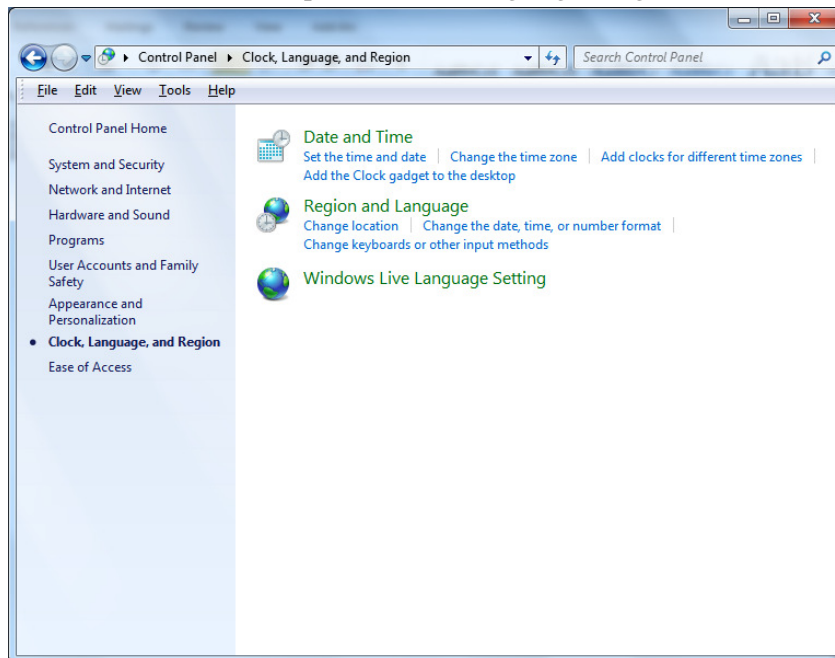




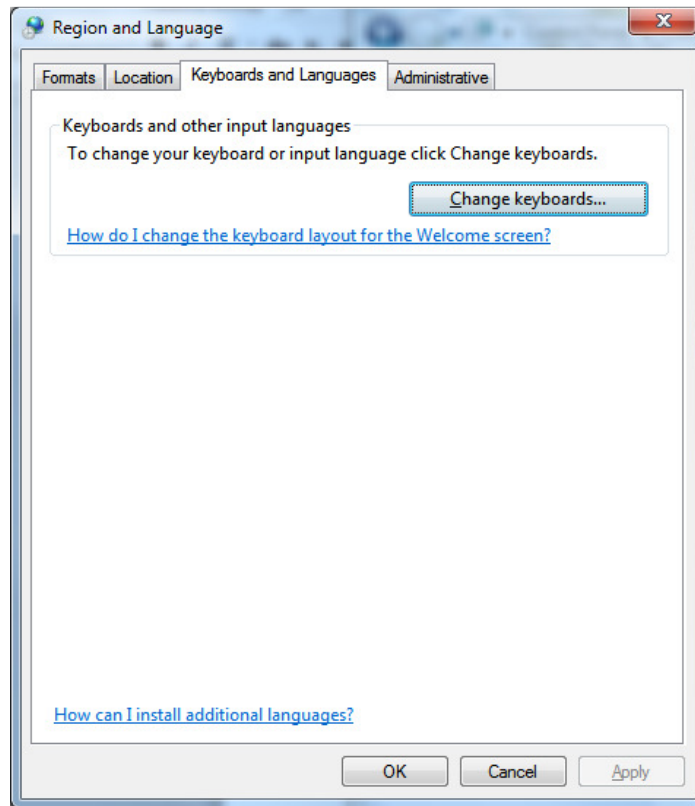
Setting the language for dbDOS

Windows Vista and Above

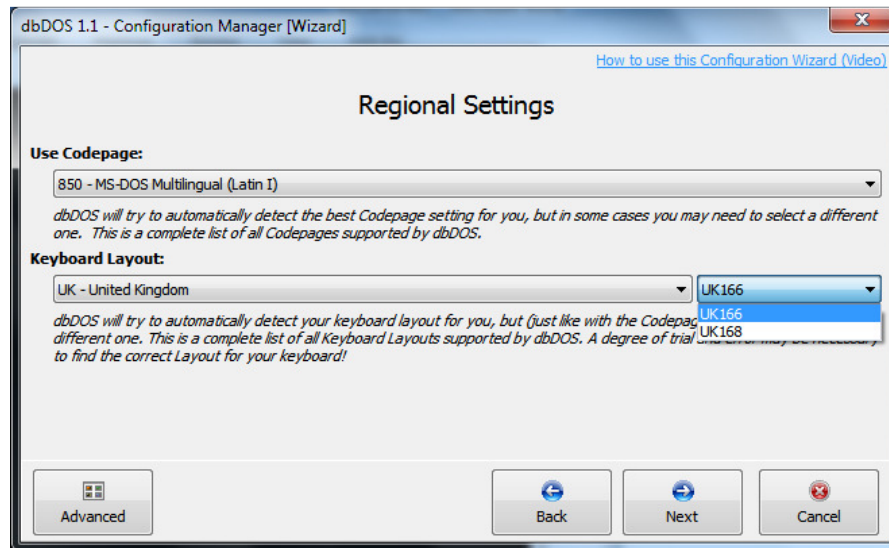
1. START|Control Panel
  - a. System and Security
  - b. Left-hand side items – pick Clock, Language, Region



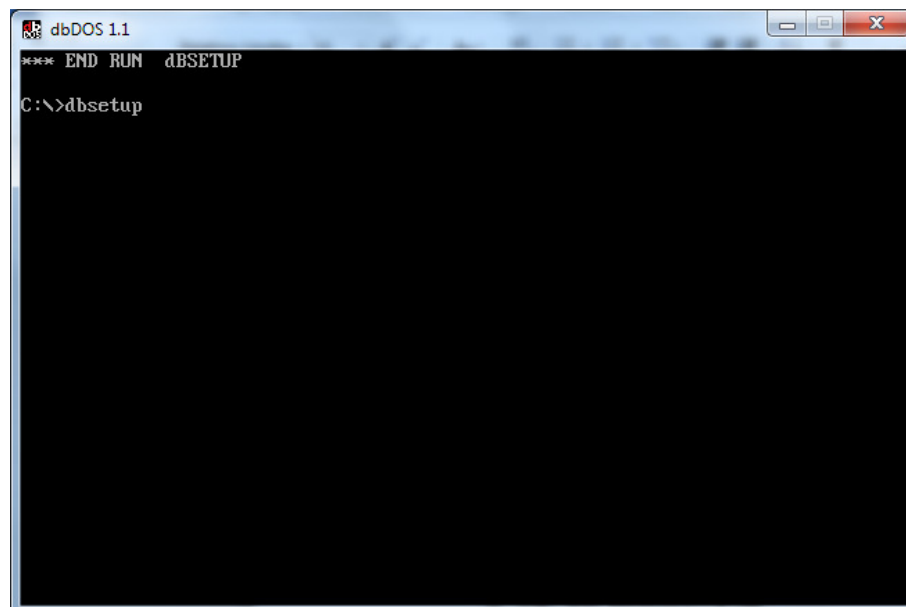
- c. Pick Region and Language



- d. Find where it is pointing to:
  - i. Usually if U.S. it is 437
  - ii. If UK or other it is 850
2. Now on to dbDOS
  - a. Set the configuration to the same as the underlying OS
  - b. Set these in the configuration manager

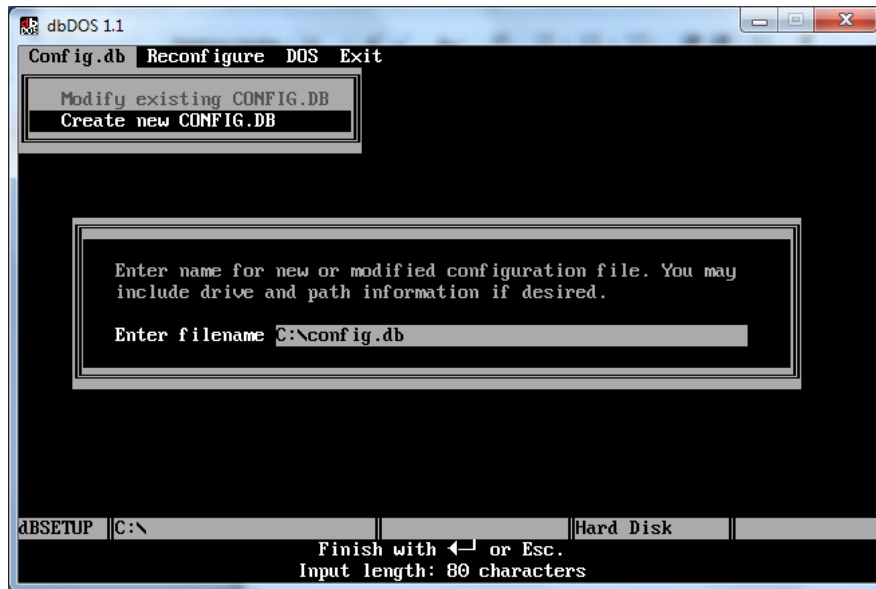
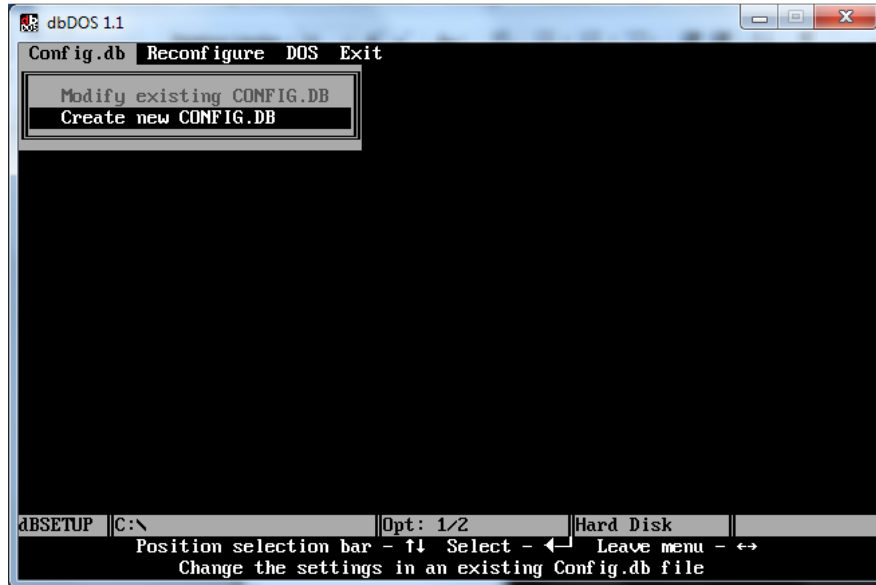


- c. US: 437 keyboard US103
  - d. UK: 850 keyboard UK166
3. On to the dbsetup.exe from the command-prompt of dBASE V
- a. Now we need to set the internal dBASE ldriver
  - b. Go to a command prompt
  - c. Type dbsetup in the directory of dBASE





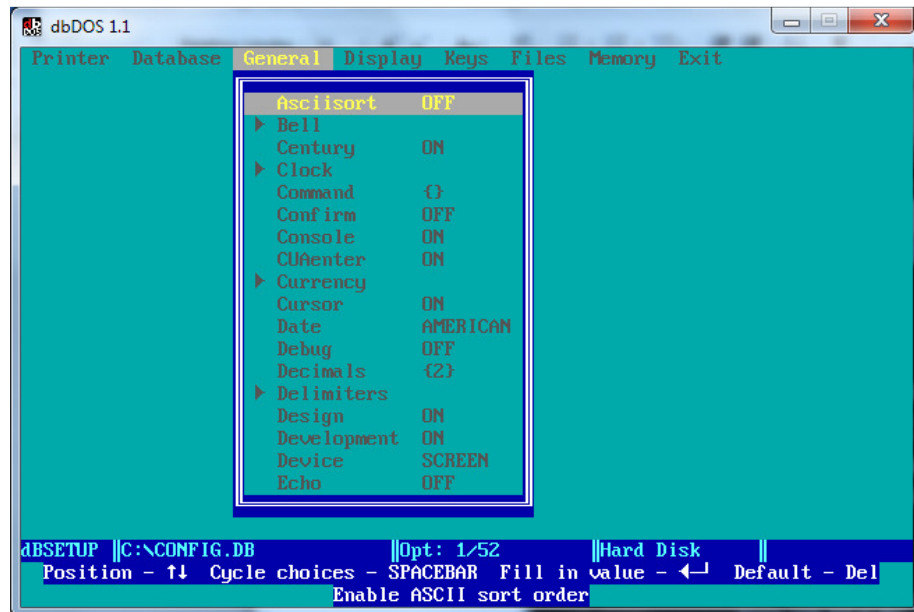
d. Modify Existing Config



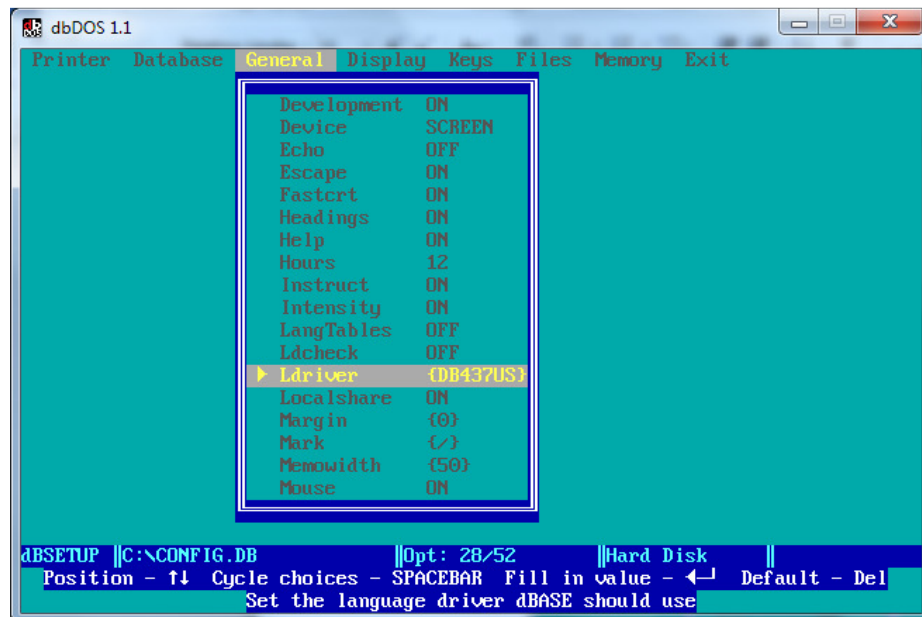
Hit enter

e. Move to General

# dbDOS PRO™

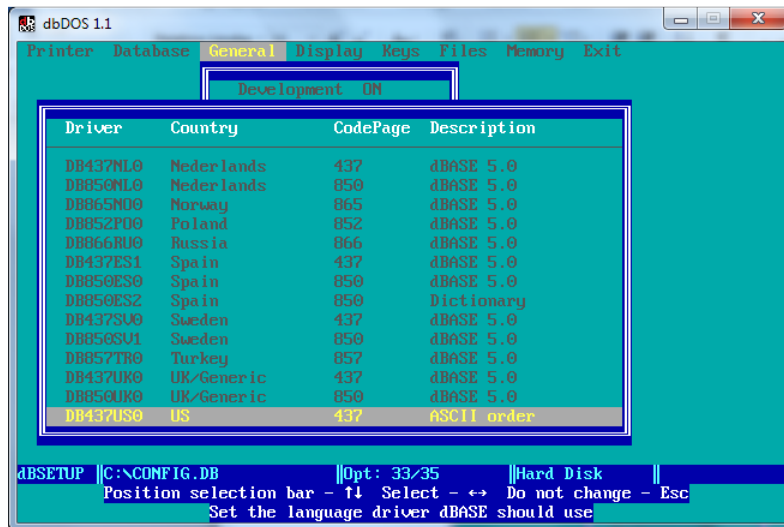


f. Scroll down to ldriver



Notice you have Ldcheck – turned off  
Ldriver should be set to match the others

g. Pick the one that matches by hitting Enter on the Ldriver



h. Hit enter, save everything and now everything should work.