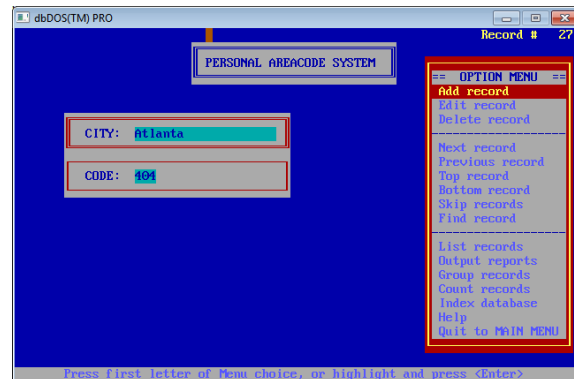
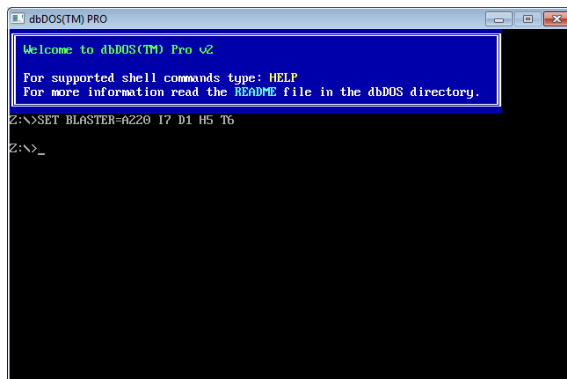




dbDOS™ PRO 3 – FAQ

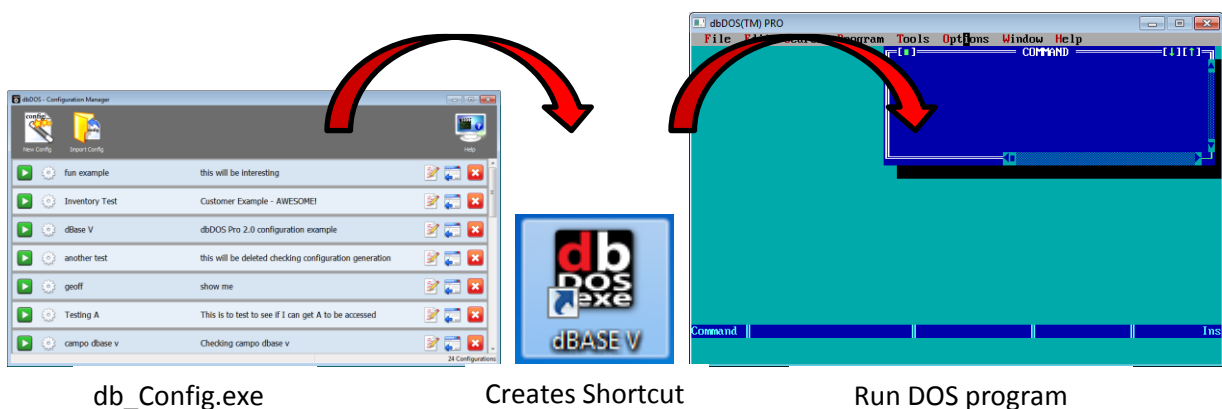
What is dbDOS™ PRO 3?

dbDOS™ PRO 3 is a virtual machine (VM) that is based on MS-DOS (DOS), which will allow users to run dBase for DOS programs. dbDOS™ PRO 3 is focused on running existing dBASE III+, IV (versions 1.0, 1.5, and 2.0), and V for DOS programs. However, dbDOS™ PRO 3 can now run virtually any other MS-DOS based programs.



How do you use it?

After moving the dBASE software; dBASE compiled programs and optionally the source code; and the dBASE data files to the new machine, install the dbDOS™ PRO 3 software on the new machine, which will automatically run the Configuration Utility program so that you can create shortcuts on the latest Windows OS. Double-click on the shortcut and you are up and running.





What can you do with dbDOS™ PRO 3?

You can run existing DOS based programs on the latest hardware and on the latest Operating System from Microsoft. dbDOS™ is focused on dBASE for DOS products, but now can run other DOS based programs.

Does dbDOS™ PRO 3 modify or change my existing DOS programs?

No, dbDOS™ PRO 3 does not change any users programs or data, it only facilitates the ability to run those existing MS-DOS / DOS programs like they were located on a DOS machine.

Do you include the supported dBASE for DOS programs with dbDOS™ PRO 3?

No, the product only includes the software to run the DOS based programs; the end-user will be responsible for having the dBASE DOS Software. dBase LLC (dBase), now offers the ability to purchase dBASE CLASSIC™ based on the dBASE V (5.0) for DOS product. You can also buy the products together as a bundle.

Does dbDOS™ PRO 3 move any files?

No, the customer is responsible for moving both the programs and data from the old hardware and moving it to the new hardware and software. The additional benefit from this operation is that both the programs and data should be backed up in this process.

Does dBase still offer support on dbDOS™ 1.x [or dbDOS Pro 2](#) installations?

No. The latest version of dbDOS™ PRO 3 is the only version that will be supported by dBase at this time.

Can I modify my existing dBASE Programs?

Absolutely! This is one of the great things about dbDOS™ PRO 3, it allows you to run DOS based dBASE just like you did back when you purchased the product. The product runs just like it did when it was on an original DOS based machine. Therefore, developers can update, modify, and create new applications using their existing DOS based dBASE products. Non developers can use dbDOS™ PRO 3 to run those programs.

Can I print with dbDOS™ PRO 3?

YES! Printing is one of the most important features of dbDOS™ and where competing products fail. dbDOS™ PRO 3 comes with the ability to print to a locally connected printer and has support for advanced users that need network printing support.



Will output to the printer look like the old printouts from MS-DOS?

The answer depends on what you are printing out. Keep in mind that dbDOS™ is trying to generate data output from a program that was released more than 30 years ago. While dbDOS™ will print the information, it may not look exactly like the old printouts. This could be due to multiple issues. Some of these issues include:

- Printer commands from dBASE not compatible with current printer
- Printer driver from DOS not compatible with current printer hardware
- Some print escape sequences not recognized on the latest Windows OS
 - Example “Condensed” print is currently not supported in Windows 7 or Windows 8

With dbDOS PRO 3 we have introduced many ways of getting the print as close as possible the original output from so many years ago. For example, if you use Enhanced printing the above issues will not likely be an issue.

What is the [Legacy] RAW Print feature?

The output stream from the DOS program goes directly to the printer. This is a legacy feature, and it is recommended that if you are having issues with printing that you go to the new enhanced printing.

What is the [Legacy] Interpreted Print Feature?

Output stream from DOS program is generated and sent to a text preview window. This output type is for legacy reasons; if you are having print issues, it is recommended that you move towards the Enhanced print option. There are many limitations with Interpreted printing.

What is Enhanced Printing?

The best way to get printouts the way they used to print. This new feature uses a stripping process for the ASCII characters going into the print channel. The new functionality strips any text decorations related to DOS and applies the Windows text decorations, thus give a more respectable output format.

What is Direct Printing?

The new RAW approach. This is a hybrid approach that takes the best features of the RAW approach and applies the Enhanced as well. This should be the first choice if the Enhanced print setting does not work.

What is PDF Printing?

A straightforward way of printing to PDF. Once the options have been selected for the



configuration, dbDOS will push all output to PDF. This PDF file is a standard PDF and can be read, printed and even changed with 3rd party PDF software.

What print drivers are included with dbDOS™ PRO 3?

ASCII – No print decorations

EPEX800 – More generic inkjet driver

EPFX800 – Alternative to the EPEX800

FX80_1, 2, and 3 – Generic printer settings mostly followed

FX85_1, 2, and 3 – More advanced Generic printer settings

GENERIC – Has a few print decorations included

POSTSCRI – Postscript print driver

How would I add a driver to my code?

The easiest way to support the driver is to add the driver line to your code. Make sure the driver is located in the dbase directory and also the directory if you have a compiled application. Adding the line is simple:

```
_pdriver = " fx80_1.pr2"
```

Is there another way to set a default print driver in dBASE?

Not really a dbDOS question, but it is relevant to the current printing issues. Yes, if you are using dBASE IV or V for DOS then dbsetup.exe can be run and a default printer driver can be assigned. Keep in mind, that any print drivers in the code will override the default set in dbsetup.exe.

Can I use Postscript with dbDOS™ and dBASE?

Please review the "what drivers are included question and "setting the print driver in code."

The answer is YES. dbDOS™ ships a Postscript printer driver with the distribution. It is called Postscri.pr2 and would be used:

```
_pdriver = " POSTSCRI.PR2"
```

Can PDF output also print to a physical printer at the same time?

Yes, there is an option in the printer setup dialog in the dbDOS Configuration program under the PDF setting. Make sure to select it because if that is not selected then only PDF output will be generated even if a default printer has been chosen for the configuration.

Can I run other DOS programs using dbDOS™ PRO 3?

YES. We do not test other MS-DOS based products; however, the system should be able to run



almost any DOS based program. You must have the product, license and be able to install the product on the machine with dbDOS™.

What common DOS based programs do people run with dbDOS™ PRO 3?

We have users of dbDOS™ using really popular DOS based programs like FoxPro, Clipper, Paradox, Lotus 1,2, 3, and WordPerfect.

Can I run other DOS versions of dBASE?

Currently dbDOS™ PRO 3 is certified on dBASE III+, IV (versions 1.0, 1.5, and 2.0), and version V of the product. This does not mean the other products will not work, but they have not been tested or certified to run in the environment.

I don't see dBASE II or dBASE III on the list is there a reason?

Yes, dbDOS™ PRO 3 does not work with dBASE II or the initial release of dBASE III. We do support dBASE III+ and greater.

How many dbDOS™ PRO 3 licenses do I need?

dbDOS™ PRO 3 is sold and licensed on a per-user basis. That means a person who purchases dbDOS™ PRO 3 can install the product on multiple machines as long as only that person uses those machines and only one machine at a time. dbDOS™ PRO 3 is licensed on a named user basis, so if multiple people will be using the product, each person that uses the product must purchase a copy of the product.

Do I have to register my dbDOS™ PRO 3?

Yes. dbDOS™ PRO 3 now has to be registered on each machine it is loaded on.

Does dbDOS™ PRO 3 use DOSBOX?

Yes. We do use DOSBOX as the VM for the dbDOS™ product. However, we have made changes to the DOSBOX product to allow it to print dBASE for DOS programs and reports. These code changes to DOSBOX are available on the dbase.com website. Keep in mind that added significant features and functionality outside of VM part of the product to make it easier to install, setup, and run your MS-DOS applications. Those additional features and functions are 100% dBase, LLC code.

Will using dbDOS™ PRO 3 convert my dBASE for DOS programs to run on Windows?

NO. dbDOS™ PRO 3 only runs the dBASE for DOS programs and applications on the Windows Operating system. dbDOS™ PRO 3 makes no changes to the underlying programs, code, or data.



Does dbDOS™ PRO 3 support the Windows based Visual dBASE (such as VdB 5.0, 5.5 and 5.7)?

NO.

Does dbDOS™ PRO 3 require Administrator rights on the particular Windows Operating Systems?

No, dbDOS™ PRO 3 has been programmed to take full advantage of Microsoft Windows® UAC™ (User Access Control) approach, so it is not a requirement to have Administrator privileges.

Is it possible to install additional dBASE based software and use it in dbDOS™ PRO 3?

Yes. The user needs to get the new programs and data installed on the machine where dbDOS™ PRO 3 is located. Once the software is in a location, the configuration needs to point to that additional directory.

Does dbDOS™ PRO 3 support network shares and multiple data folders?

Absolutely! One of the main enhancements from dbDOS™ 1.5.1, dbDOS Pro 2 and dbDOS™ PRO 3 is the fact that the product fully supports those types of setups.

Does dbDOS™ PRO 3 allow the users to create new programs and code?

Yes. dbDOS™ PRO 3 enables the user to run dBASE for DOS just like they were on a MS-DOS machine from years back. Users should be able to modify and update programs to run inside dbDOS™ PRO 3.

Can dbDOS™ PRO 3 display in full screen mode?

Yes. One of the options when creating a configuration is to start the application in full screen mode. Note: There is certain hardware configurations that will not allow full-screen to work, however, in the new PRO 3 edition of the product, additional options have been made available to make the option work on more hardware.

Can dbDOS™ PRO 3 support Multi-User dBASE applications?

The current version of dbDOS™ PRO 3 does not officially support multi-user systems with file locking across the network. However, we do have many customers using the product that way, but dbDOS™ has not been tested or certified for that type of application. Use of the product in that manner is at your own risk.